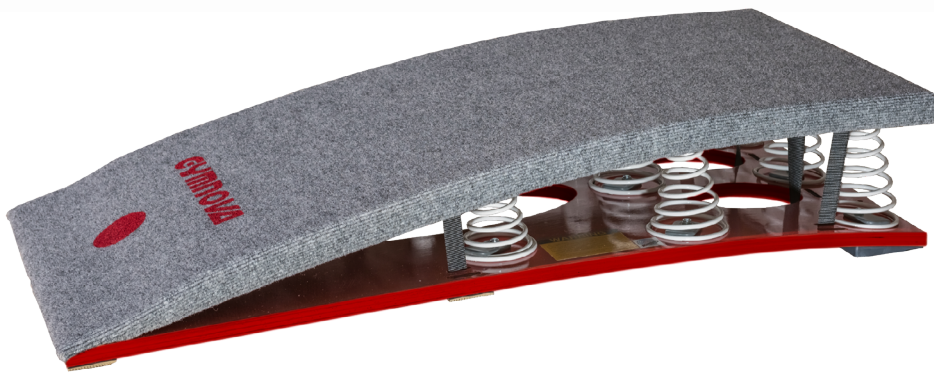


## COMPETITION SPRINGBOARDS HARD & SOFT



**Ref. 2186**  
**Evolution** Springboard Hard



**Ref. 2187**  
**Evolution** Springboard Soft

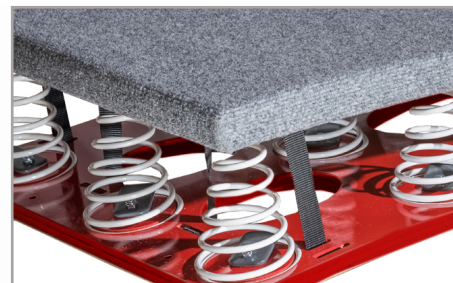
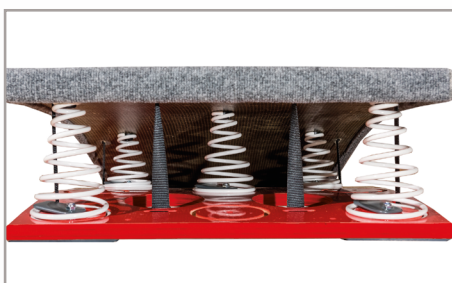
### **SAFETY, COMFORT & PERFORMANCE**

Designed for intensive use, these competition springboards allow exercises to be repeated while minimising premature gymnast fatigue.

There is high elasticity across the entire working surface thanks to the positioning of the springs and the materials used including a carbon fiber layer over the entire wooden board. These springboards guarantee optimal comfort and stability on impact and enable virtually immediate energy return for gymnasts.

Available in 2 models (Hard & Soft) male and female gymnasts can choose whichever best suits their physique and style.

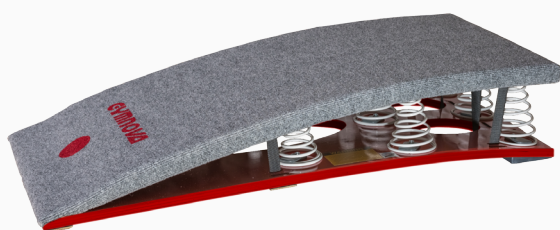
# Technical specifications



- Standardised 120 x 60 cm size board in curved multi-ply timber and carbon fibre covered in carpet
- Height = 23 cm
- Carrying handles incorporated in the frame
- Anti-slip pads
- Easily transportable
- Tapered steel springs

## References available

FIG approved 

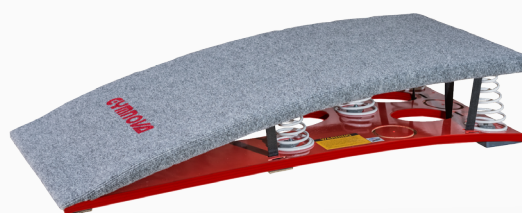


Ref. 2186

### Ref. 2186: Springboard Evolution Hard

Aimed more at the larger build (50 -100 Kg).  
Distinguishing mark: red dot on the board.  
With 8 springs.  
Weight = 25 Kg.

FIG approved 



Ref. 2187

### Ref. 2187: Springboard Evolution Soft

Aimed more at the lighter build (40 -75 Kg).  
With 5 springs.  
Weight = 23 Kg.