

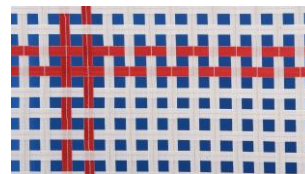
MASTER TRAMPOLINES

EUROTRAMP®

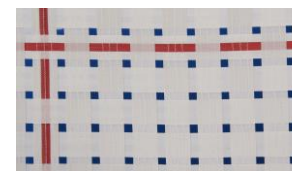
- ❑ Ideal for beginners
- ❑ The small size reduces gymnasts' fear
- ❑ Great comfort and well-balanced jumping features, perfect for beginners to enable a successful start in the trampolining discipline
- ❑ Ideal for clubs, schools, and leisure sports
- ❑ Refs. 21100 and 21200 can be used in the therapeutic field, 45 x 45 mm bed offers a very soft and skin-friendly surface
- ❑ Delivered with a transport trolley and a service bag (Ref. E31002)

TECHNICAL FEATURES:

- ❑ Reinforced «electro galvanized» steel frame, section profile «egg shaped»: 457 x 275 x 99 cm
- ❑ 366 x 183 cm bed attached to the frame with 100 tempered steel springs
- ❑ 32 mm thick protection pads included
- ❑ Space on the floor (Unfolded): 457 x 275 x 99 cm (Lxllxh)
- ❑ Non-slip pads
- ❑ Maximum immersion depth: 99 cm
- ❑ Weight: 190 kg



13 x 13 mm bed



45 x 45 mm bed



Synthetic bed

AVAILABLE REFERENCES:

REF.	BEDS	PADDING	TRANSPORT TROLLEY	USE
19100	13 x 13	32 mm	Lifting roller stand	<i>Learning</i>
19200	13 x 13	32 mm	Lifting roller stands Safe & Comfort	<i>Learning</i>
21100	45 x 45	32 mm	Lifting roller stand	<i>Learning / Therapeutic field</i>
21200	45 x 45	32 mm	Lifting roller stands Safe & Comfort	<i>Learning / Therapeutic field</i>
22100	Synthetic	32 mm	Lifting roller stand	<i>School / Leisure</i>
22200	Synthetic	32 mm	Lifting roller stands Safe & Comfort	<i>School / Leisure</i>

In order to make the best use of MASTER range, it is recommended to use it in a sport hall 6 m high.